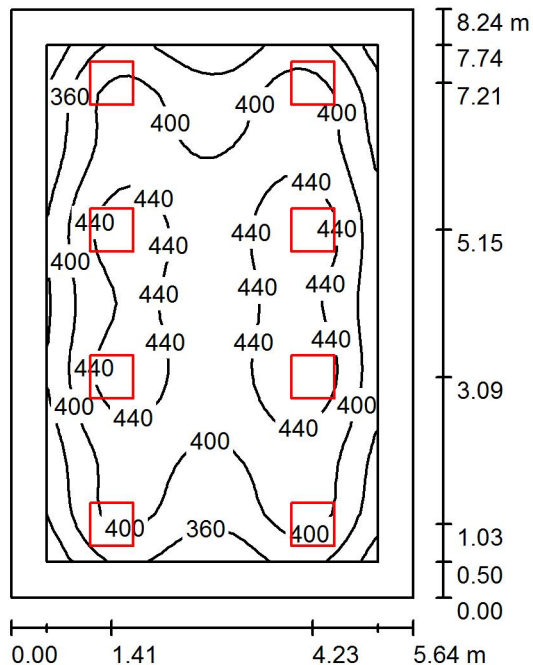


Operator  
Telephone  
Fax  
e-Mail

## 1.15,2.09 / Summary



Height of Room: 3.000 m, Mounting Height: 3.000 m, Maintenance factor: 0.90

Values in Lux, Scale 1:106

Surface	$\rho$ [%]	$E_{av}$ [lx]	$E_{min}$ [lx]	$E_{max}$ [lx]	$u_0$
Workplane	/	408	290	474	0.712
Floor	20	329	196	402	0.596
Ceiling	70	84	61	101	0.723
Walls (4)	50	202	76	365	/

### Workplane:

Height: 0.750 m  
Grid: 32 x 32 Points  
Boundary Zone: 0.500 m

Illuminance Quotient (according to LG7): Walls / Working Plane: 0.520, Ceiling / Working Plane: 0.207.  
Proportion of points with less than 400 lx (for IEQ-7): 36.52%.

### Luminaire Parts List

No.	Pieces	Designation (Correction Factor)	$\Phi$ (Luminaire) [lm]	$\Phi$ (Lamps) [lm]	P [W]
1	8	OCTA-LIGHT PLC OCTL-OLS-30-RNWR (1.000)	3040	3100	28.0
Total:			24319	24800	224.0

Specific connected load:  $4.82 \text{ W/m}^2 = 1.18 \text{ W/m}^2/100 \text{ lx}$  (Ground area:  $46.47 \text{ m}^2$ )